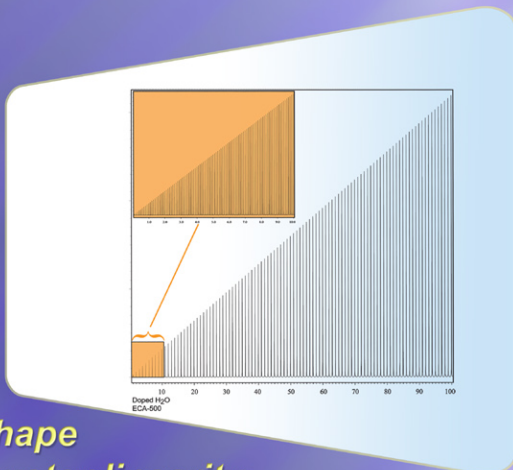
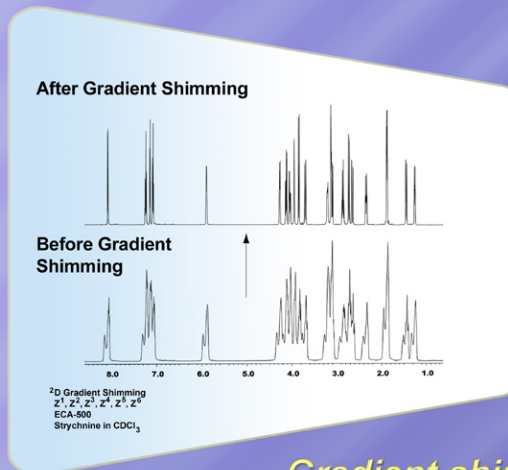


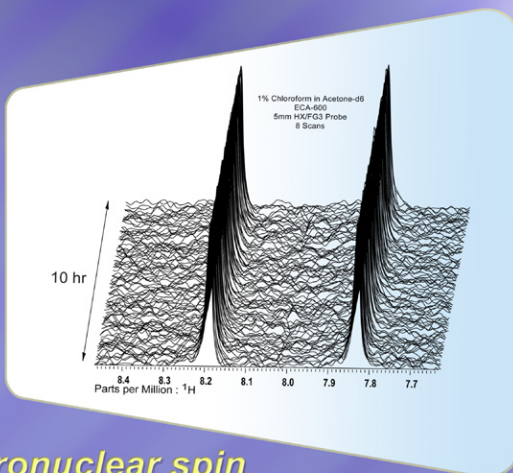
High Performance NMR



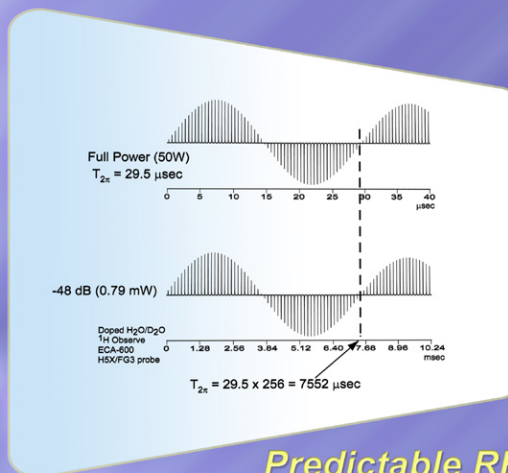
*RF shape
attenuator linearity*



Gradient shimming



*Heteronuclear spin
echo stability test*



*Predictable RF
amplitude control*

- Highest magnetic fields – 920 MHz and beyond
- Expandable digital RF channels & gradients
- Flexible console configurations for research
- Biological & protein NMR
- Solid-state NMR

ECA



JEOL